

Jacks Panels

Multiple Jacks Panel

Introduction

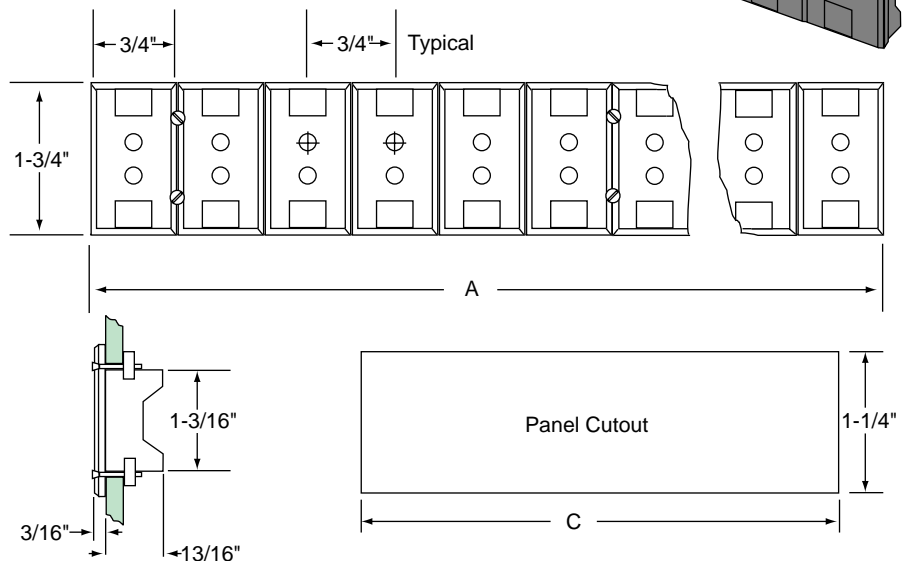
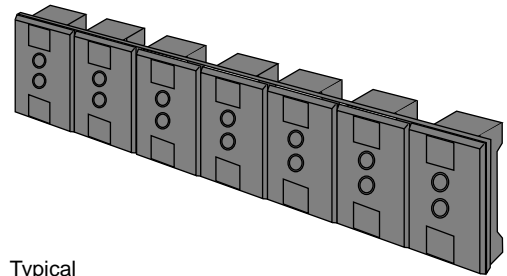
The multiple jacks panel can be wired and installed from the front of the panel. Jack panels are available with up to 12 circuit connections. A self-contained fastening device is permanently attached for simplified mounting. Strong metal T nuts are drawn up against the back wall of the mounting surface and held in position by screws tightened from the front.

The jack panel matches ANSI thermocouple grade calibrations to maintain sensing accuracy. Alloy and circuit numbers are marked on the face of the panel. The corresponding circuit numbers and polarity identification are marked on the back.

The low mass of flange type spring-loaded inserts eliminates temperature gradients and spurious EMF. Correct polarity is achieved by having the negative inserts larger than the positive ones.

The jacks are molded of a high performance reinforced compound that will withstand ambient temperatures up to 300°F. They accept quick disconnect plugs. Each jack circuit weighs one ounce.

Mounting



Dim	Number of Circuits											
	2	3	4	5	6	7	8	9	10	11	12	
A	1-1/2	2-1/4	3	3-3/4	4-1/2	5-1/4	6	6-3/4	7-1/2	8-1/4	9	
C	1-5/16	2-1/16	2-13/16	3-9/16	4-5/16	5-1/16	5-13/16	6-9/16	7-5/16	8-1/16	8-13/16	

Note: Dimensions in inches.

Jacks Panels

Ordering Information

Model No. HD40-0000 - **000** - -
Field No. 1 2 3 4 5 6 7 8 9 10 11 12 13 14 15

Schedule: S6

Fields 1 through 4. BASE MODEL

HD40- Multiple Jacks Panel

Fields 5 through 8. RESERVED

Field 9. THERMOCOUPLE TYPE

- C - Type C
- E - Type E
- J - Type J
- K - Type K
- R - Type R or Type S
- T - Type T
- U - Uncompensated

Fields 10, 11, 12. RESERVED

Field 13. MOUNTING

- H - Horizontal
- V - Vertical

Fields 14, 15. NUMBER OF CIRCUITS

- 02 - Two
- 03 - Three
- 04 - Four
- 05 - Five
- 06 - Six
- 07 - Seven
- 08 - Eight
- 09 - Nine
- 10 - Ten
- 11 - Eleven
- 12 - Twelve

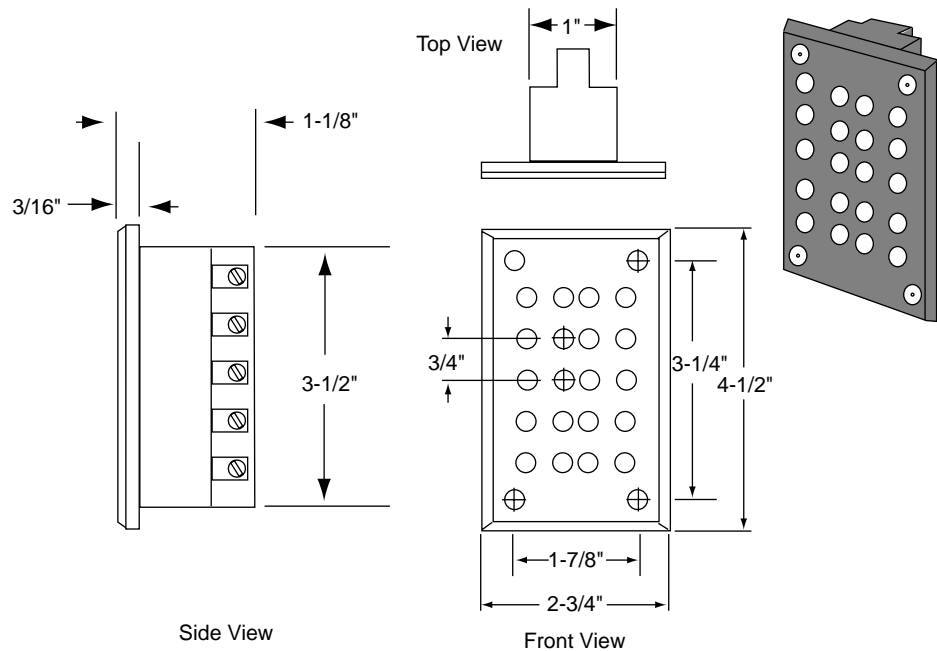
Jacks Panels

Five Jacks Panel

Introduction

This is a single unit, phenolic plastic, five jacks panel that can be mounted in a standard electrical conduit box (FS or FD). Panels can be connected to make a large panel with electrical conduit gang boxes. Contacts are of thermocouple calibration material and of standard size to accept the quick disconnect plug. On special order, the panel can be assembled in any combination of outlet calibrations. Etched aluminum discs on the front panel identify the thermocouple calibration. Weight: four ounces.

Mounting



Ordering Information

Model No. HD 4 1 - 0 0 0 0 - 0 0 0 - 0 - 0 5
Field No. 1 2 3 4 5 6 7 8 9 10 11 12 13 14 15

Schedule: S6

Fields 1 through 4. BASE MODEL

HD41- Five Jacks Panel

Fields 5 through 8. RESERVED

Field 9. THERMOCOUPLE TYPE

- J - Type J
- K - Type K
- R - Type R
- S - Type S
- T - Type T

Fields 10 through 15. RESERVED